

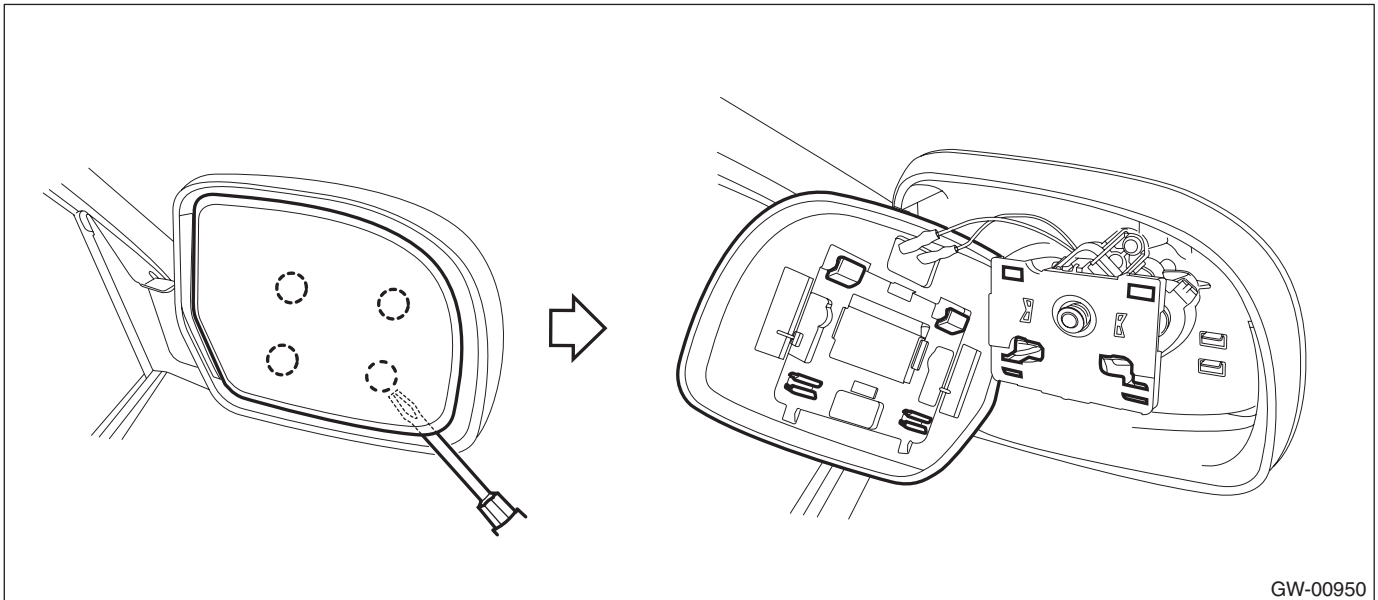
8. Scalp Cap

A: REPLACEMENT

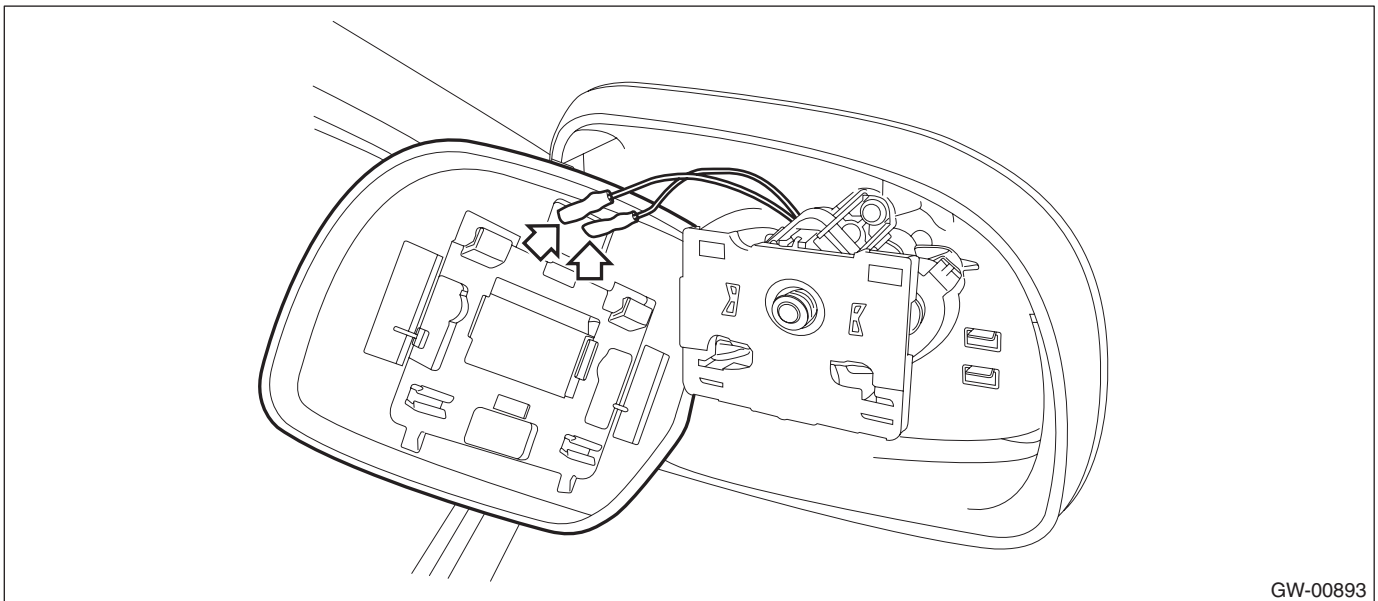
1. MODEL WITHOUT ELECTRIC RETRACTABLE MIRROR

CAUTION:

- When removing the mirror, be careful not to damage the back surface of mirror with a flat tip screwdriver.
 - When installing the mirror, insert the connector and clip securely.
- 1) Operate the remote control mirror switch to face the mirror surface upward.
 - 2) Disconnect the ground cable from battery.
 - 3) Remove the outer mirror.
 - (1) Disconnect the clips using a flat tip screwdriver.



(2) Disconnect the mirror heater connector. (Model with mirror heater)



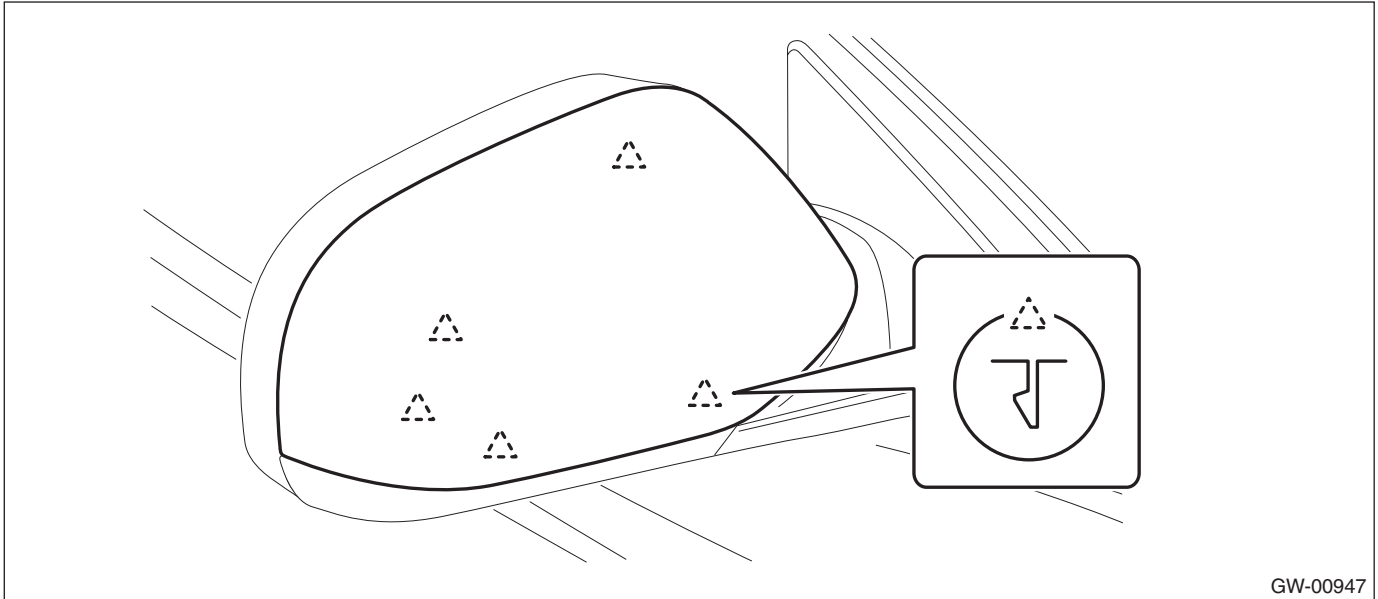
Scalp Cap

GLASS/WINDOWS/MIRRORS

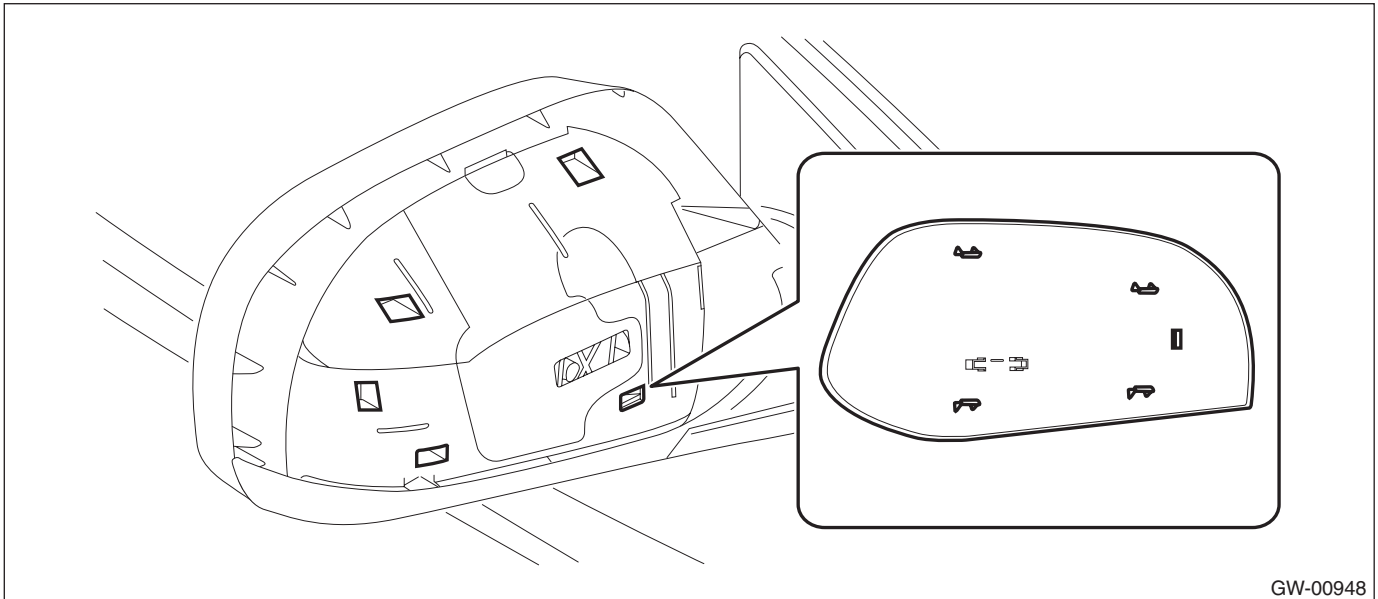
4) Disconnect the claws and then remove the scalp cap.

CAUTION:

Be careful not to apply excessive force when removing the scalp cap, as the lower hooks may become damaged.



5) Engage the claws into the hole and install the scalp cap.

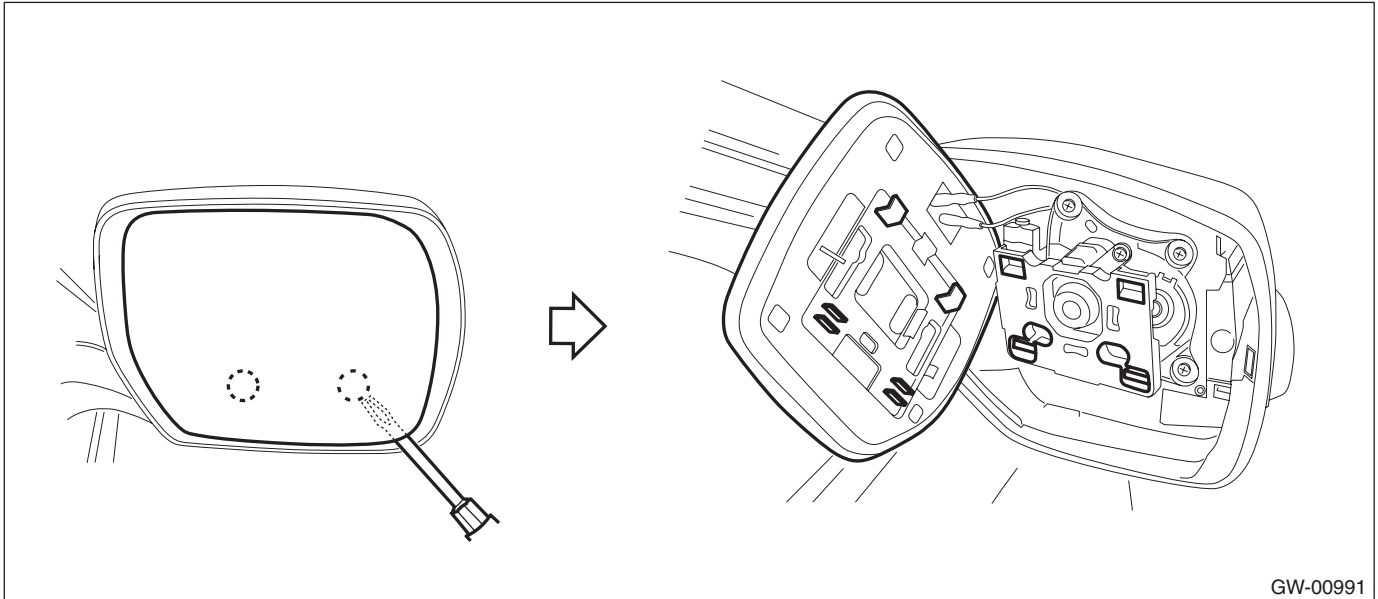


6) Check that all the claws are securely engaged.

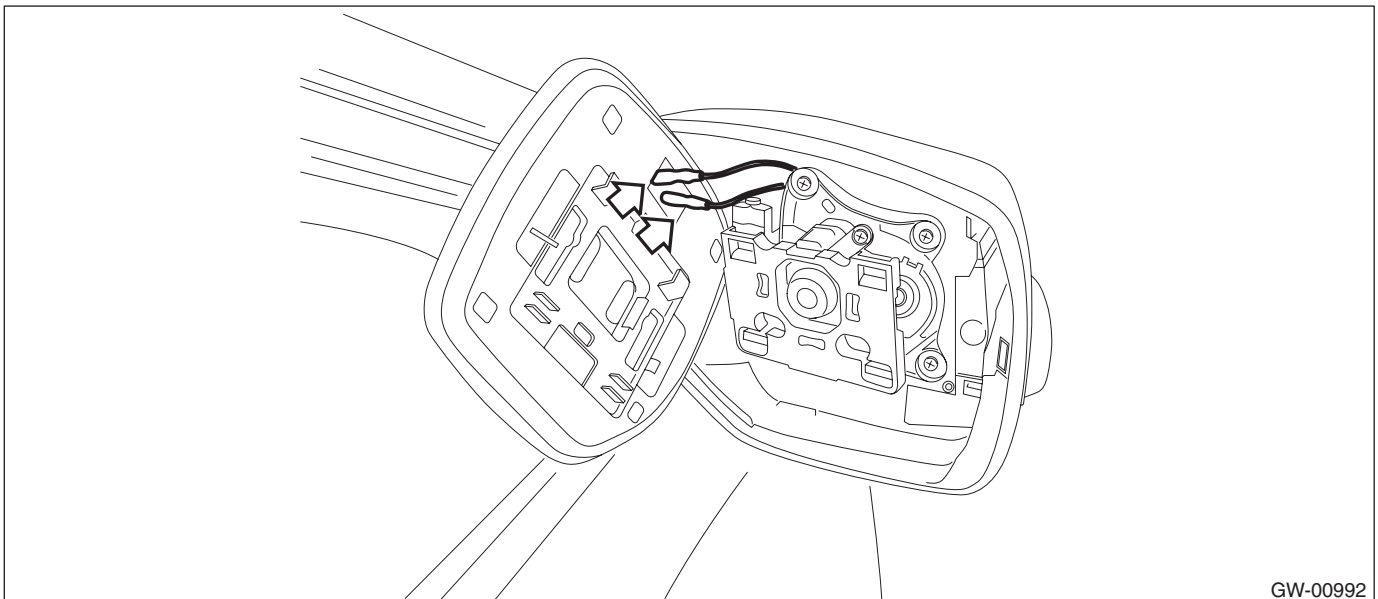
2. MODEL WITH ELECTRIC RETRACTABLE MIRROR

CAUTION:

- When removing the mirror, be careful not to damage the back surface of mirror with a flat tip screwdriver.
 - When installing the mirror, insert the connector and clip securely.
- 1) Operate the remote control mirror switch to face the mirror surface upward.
 - 2) Disconnect the ground cable from battery.
 - 3) Remove the outer mirror.
 - (1) Using a flat tip screwdriver, release the clips then remove the outer mirror by sliding downward.



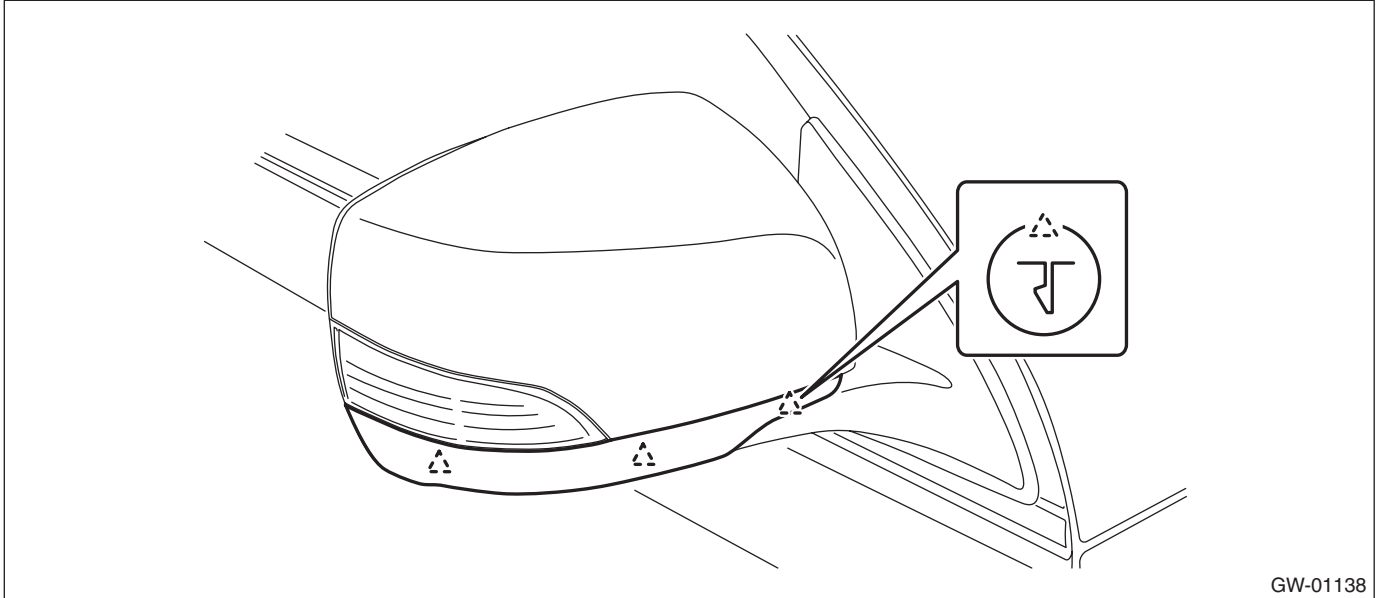
(2) Disconnect the mirror heater connector. (Model with mirror heater)



Scalp Cap

GLASS/WINDOWS/MIRRORS

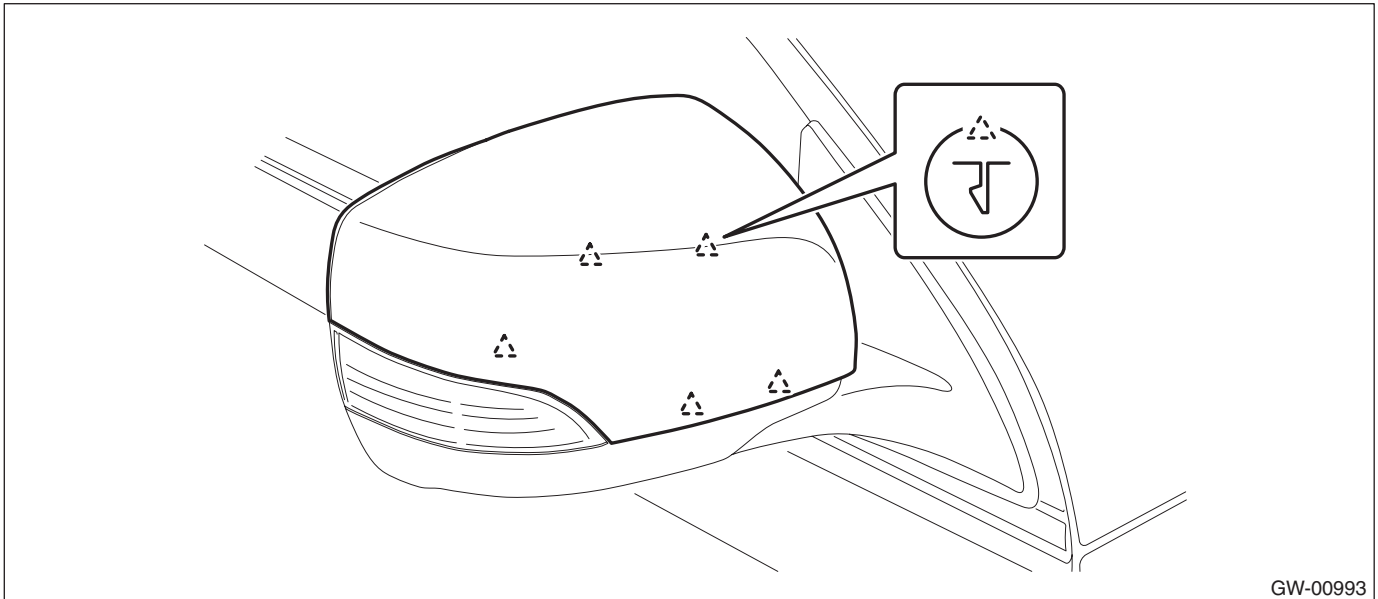
4) Disconnect the claws and then remove the outer mirror lower cover.



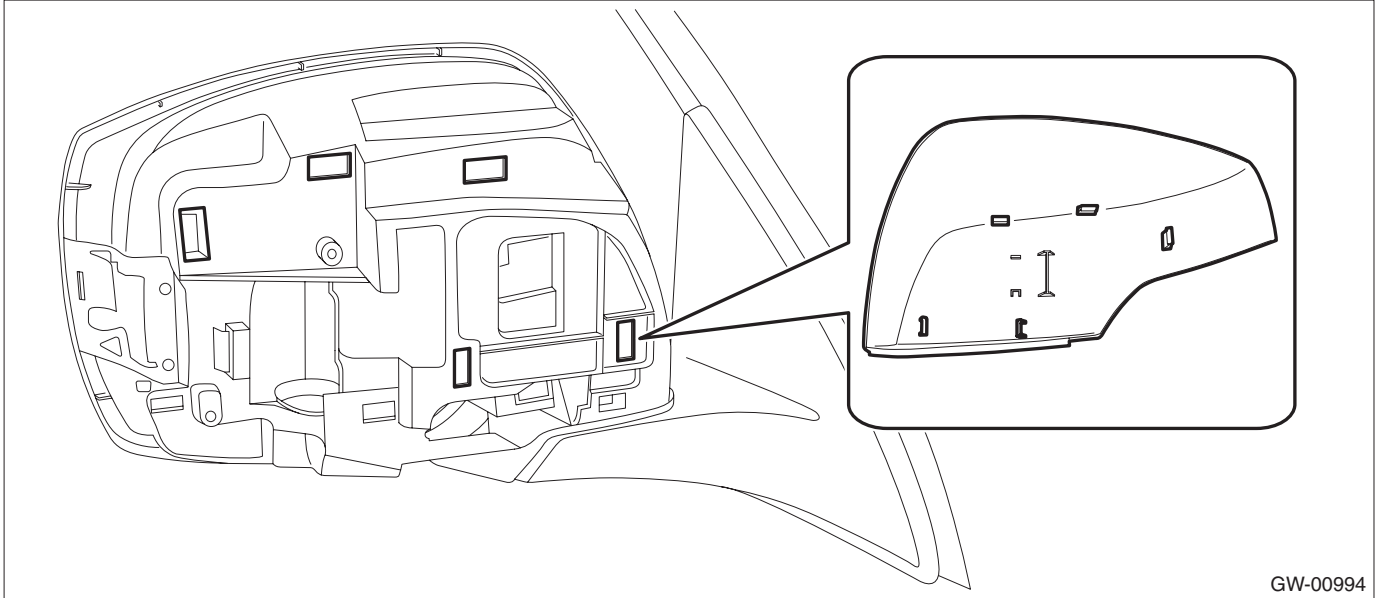
5) Disconnect the claws and then remove the scalp cap.

CAUTION:

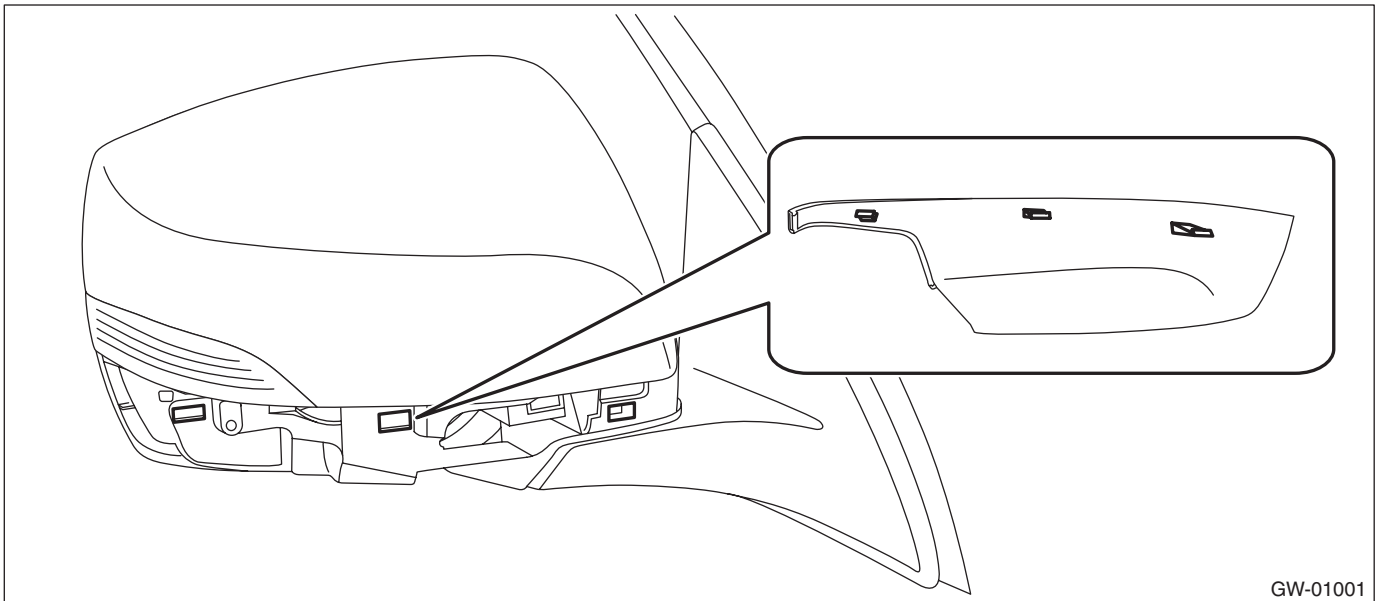
Be careful not to apply excessive force when removing the scalp cap, as the lower hooks may become damaged.



6) Engage the claws into the hole and install the scalp cap.



7) Engage the claws into the hole and install the outer mirror lower cover.



8) Check that all the claws are securely engaged.

9) Install the outer mirror in the reverse order of removal.