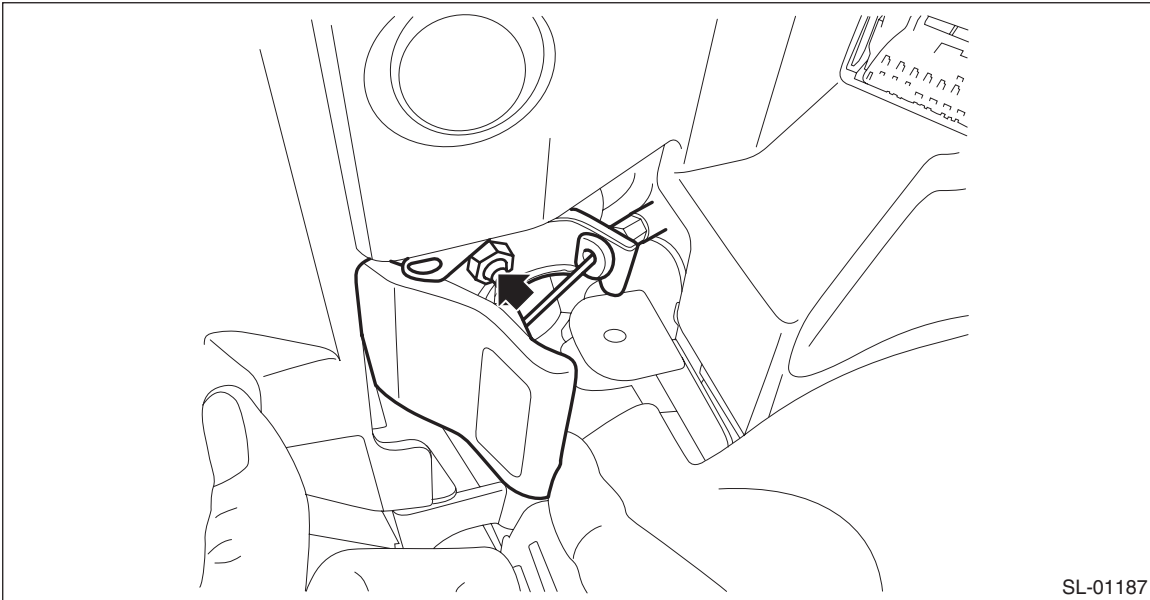


## 19.Remote Openers

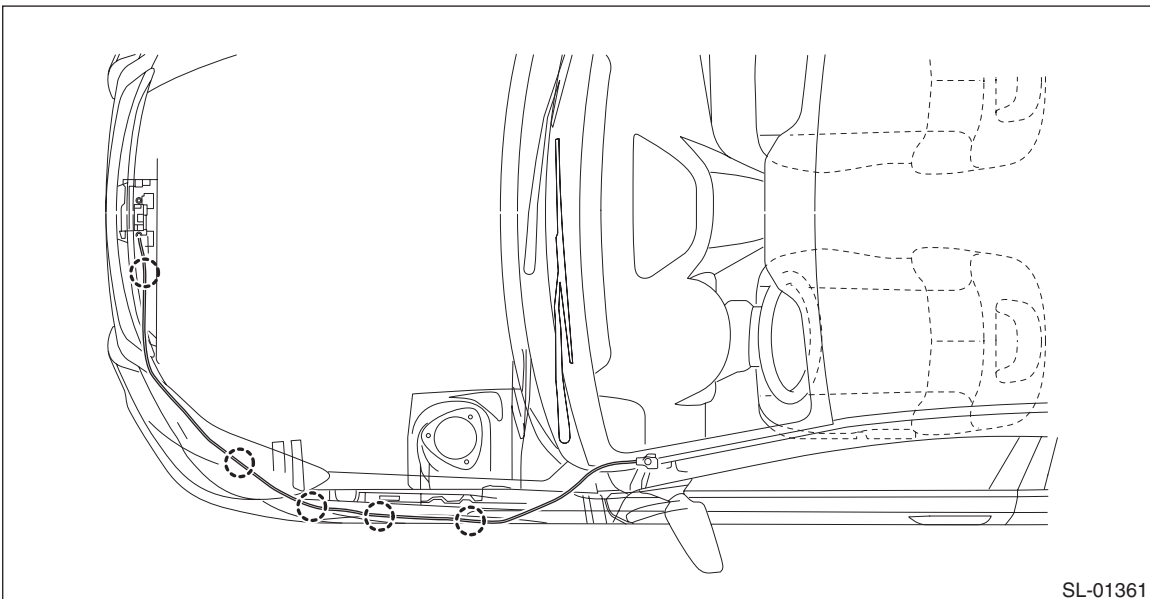
### A: REMOVAL

#### 1. FRONT HOOD OPENER

- 1) Remove the opener lever.
  - (1) Remove the cable.
  - (2) Remove the nut, and detach the opener lever.

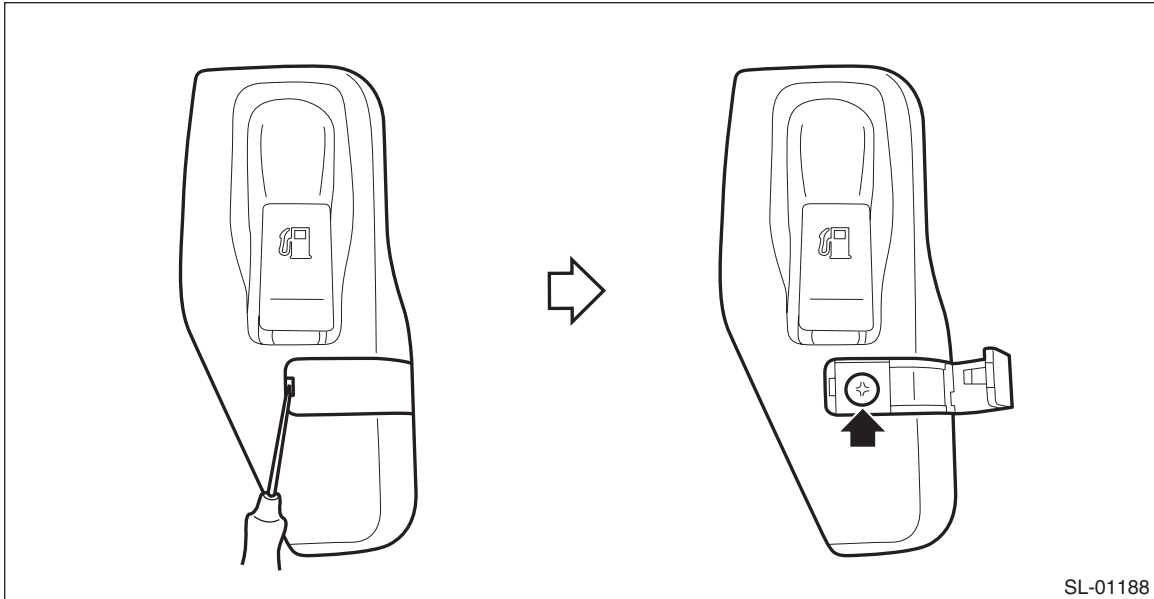


- 2) Remove the following parts and remove the cable clip and cable.
  - Front hood lock ASSY: <Ref. to SL-64, REMOVAL, Front Hood Lock Assembly.>
  - Instrument panel lower cover: <Ref. to EI-61, REMOVAL, Instrument Panel Lower Cover.>

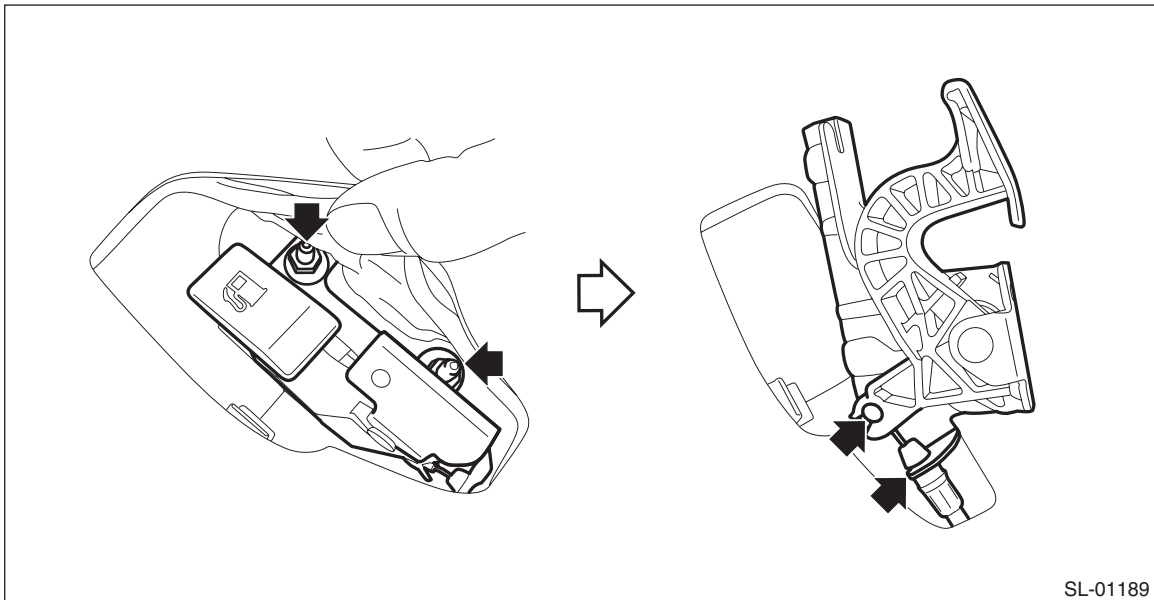


### 2. FUEL FLAP OPENER

- 1) Remove the pull handle cover.
  - (1) Open the cover by using a flat tip screwdriver.
  - (2) Remove the screw and remove the pull handle cover.



- 2) Remove the opener handle.
  - (1) Remove the nut.
  - (2) Remove the cable from opener pull handle.

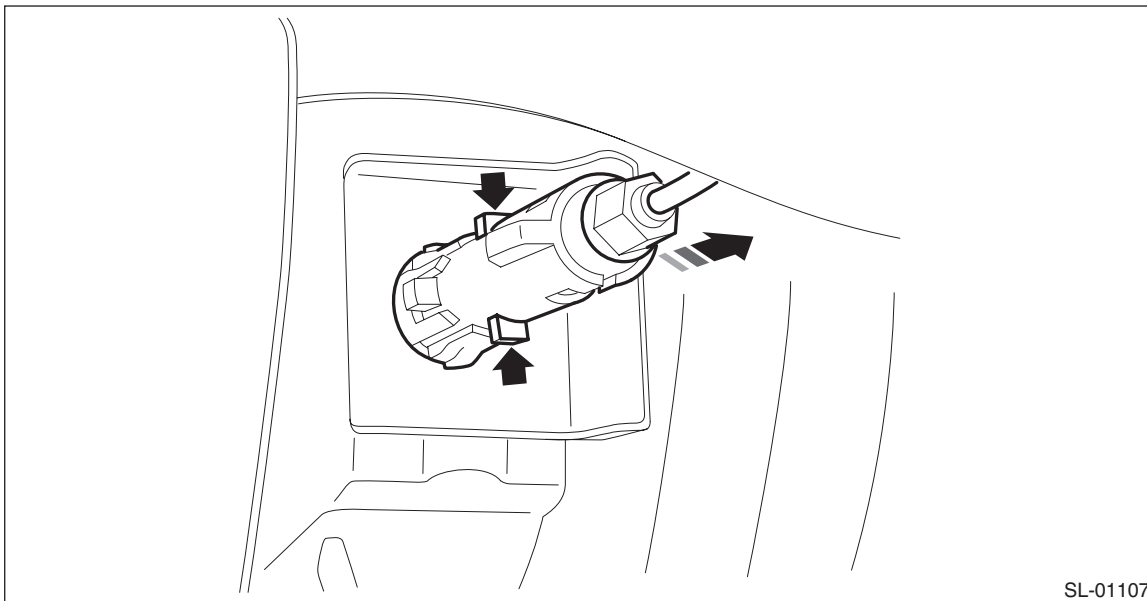


- 3) Remove the rear quarter trim RH. (OUTBACK model) <Ref. to EI-112, OUTBACK MODEL, REMOVAL, Rear Quarter Trim.>
- 4) Remove the trunk room trim (RH). (Sedan model) <Ref. to EI-127, TRUNK ROOM TRIM, REMOVAL, Trunk Room Trim.>

5) Remove the fuel lock inside the quarter panel.

(1) Press the claws of the fuel lock.

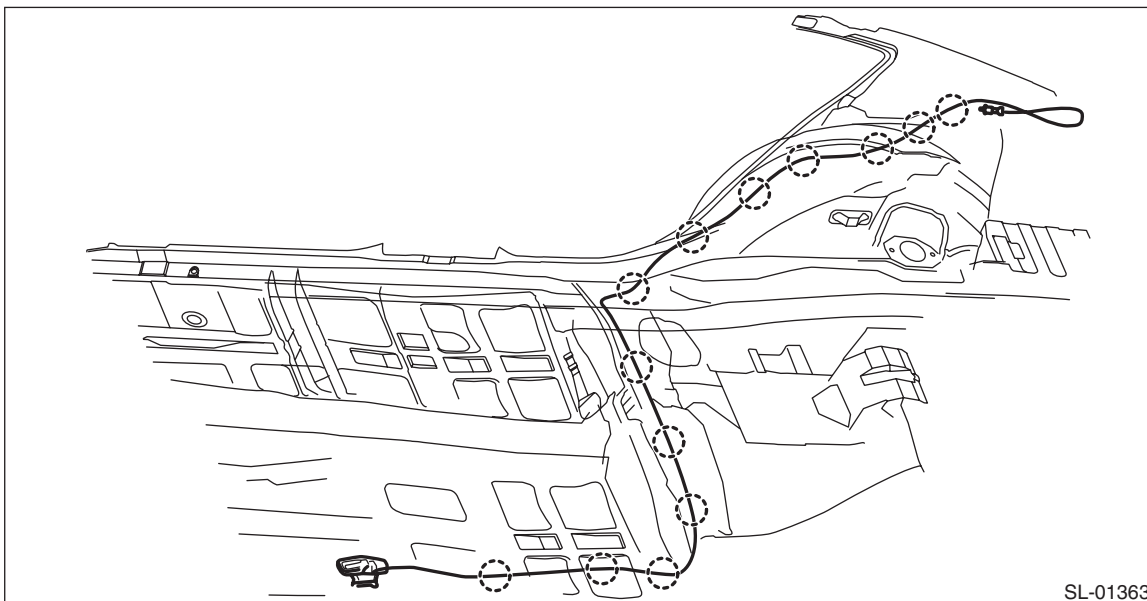
(2) While keeping the condition in step (1), pull the fuel lock to the rearward of the vehicle.



6) Remove the lower inner trim. <Ref. to EI-94, REMOVAL, Lower Inner Trim.>

7) Remove the cable from the clip.

- Sedan model

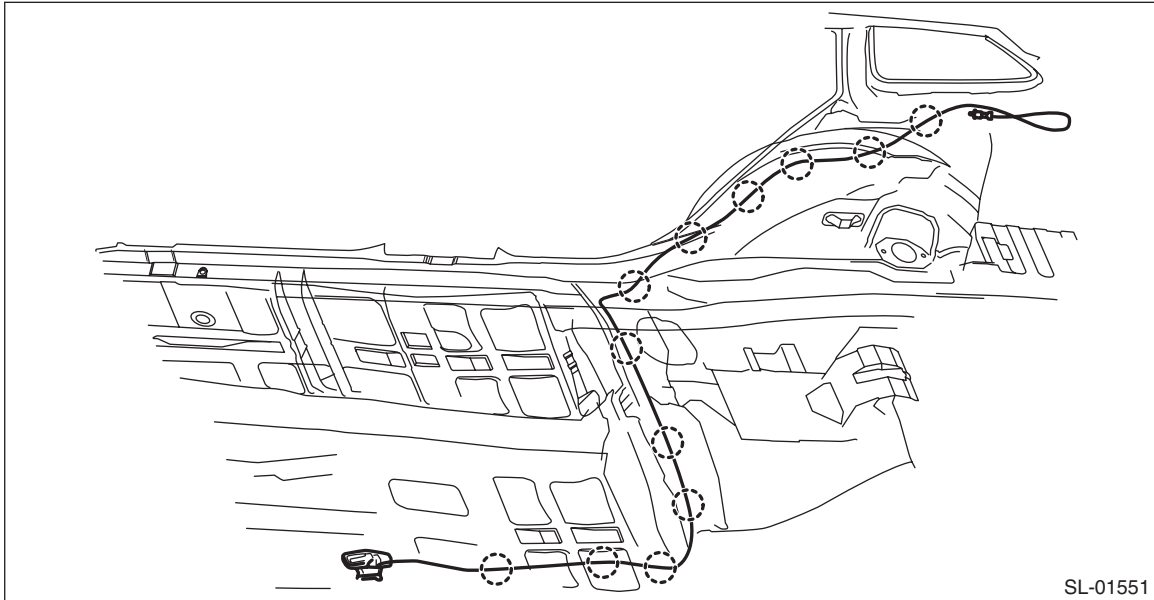


# Remote Openers

## SECURITY AND LOCKS

---

- OUTBACK model



### B: INSTALLATION

- 1) Before installation, check the following items.
  - Cable is free from deformation such as fray.
- 2) Install each part in the reverse order of removal.

#### ***Tightening torque:***

***Refer to “COMPONENT” of “General Description”. <Ref. to SL-6, FRONT HOOD LOCK AND REMOTE OPENERS, COMPONENT, General Description.>***

### C: INSPECTION

Check if the front hood and fuel flap operate normally.