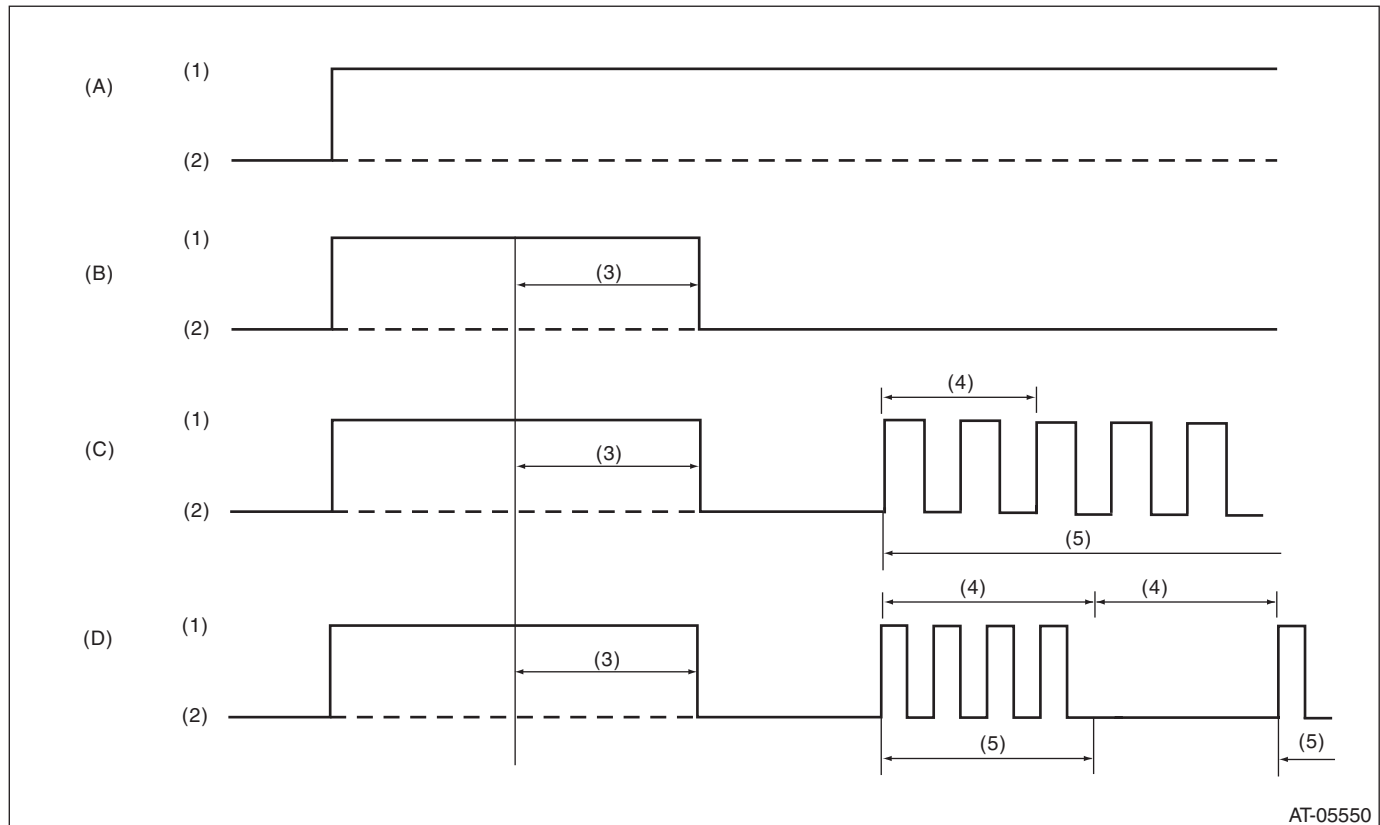


### 12.AT OIL TEMP Warning Light Display

#### A: OPERATION

When any on-board diagnostics item is malfunctioning, or the learning has not yet completed, AT OIL TEMP light blinks. Blinking continues from the engine start to the ignition switch OFF. The faulty parts or unit can be identified by reading DTCs. Problems which occurred previously can also be identified through the memory function. If the AT OIL TEMP light does not blink although a problem is occurring, the problem can be determined by checking the performance characteristics of each sensor using the Subaru Select Monitor. If the learning has not yet completed, «Learning not completed» is displayed when the Subaru Select Monitor is connected while AT OIL TEMP light is blinking. The AT OIL TEMP light blinking will go off, when the learning is performed. Indicator light signal patterns are as shown in the figure.



(A) Ignition switch (engine OFF)

(B) Normal (engine ON)

(C) Faulty (engine ON)

(D) Learning not completed (engine ON)

(1) ON

(3) 2 seconds

(5) Blink

(2) OFF

(4) 1 second

When the AT OIL TEMP light does not operate normally, check the AT OIL TEMP light circuit. <Ref. to 5AT(diag)-26, INSPECTION, AT OIL TEMP Warning Light Display.>

# AT OIL TEMP Warning Light Display

## AUTOMATIC TRANSMISSION (DIAGNOSTICS)

### B: INSPECTION

#### DIAGNOSIS:

- AT OIL TEMP light circuit is open or shorted.
- Combination meter malfunction

#### TROUBLE SYMPTOM:

- When the ignition switch is turned to ON, the AT OIL TEMP light does not illuminate.
- AT OIL TEMP light remains lit after engine start.

Step	Check	Yes	No
<b>1</b> <b>CHECK AT OIL TEMP LIGHT.</b> Turn the ignition switch to ON.	Does the AT OIL TEMP light illuminate?	Go to step 2.	Perform the self-diagnosis of combination meter. <Ref. to IDI-8, SELF-DIAGNOSIS DISPLAY MODE, OPERATION, Combination Meter System.>
<b>2</b> <b>CHECK AT OIL TEMP LIGHT.</b> After the ignition switch is ON, wait for 2 seconds or more.	Does the AT OIL TEMP light illuminate?	Go to step 3.	Go to step 4.
<b>3</b> <b>CHECK AT OIL TEMP LIGHT.</b> Start the engine.	Does the AT OIL TEMP light go off?	Current condition is normal. Go back to Basic Diagnostic Procedure. <Ref. to 5AT(diag)-2, Basic Diagnostic Procedure.>	Go to step 6.
<b>4</b> <b>CHECK SUBARU SELECT MONITOR COMMUNICATION.</b> Connect the Subaru Select Monitor to data link connector.	Is the communication between Subaru Select Monitor and TCM normal?	Go to step 5.	Check the power supply ground circuit of TCM and Subaru Select Monitor communication. <Ref. to 5AT(diag)-30, Diagnostic Procedure for Subaru Select Monitor Communication.>
<b>5</b> <b>CHECK DTC.</b> Read the DTC relating the TCM using the Subaru Select Monitor.	Is DTC displayed?	Perform the diagnosis according to DTC.	Go to step 6.
<b>6</b> <b>CHECK TCM.</b> Read the data of «ATF Temperature Lamp» using the Subaru Select Monitor.	Is «ON» displayed?	Go to step 7.	Perform the self-diagnosis of combination meter. <Ref. to IDI-8, SELF-DIAGNOSIS DISPLAY MODE, OPERATION, Combination Meter System.>
<b>7</b> <b>CHECK TCM.</b> Read the data of «ATF Temp.» using the Subaru Select Monitor.	Is the display 130°C or more?	Go to step 8.	Replace the TCM. <Ref. to 5AT-56, Transmission Control Module (TCM).>

# AT OIL TEMP Warning Light Display

AUTOMATIC TRANSMISSION (DIAGNOSTICS)

Step		Check	Yes	No
8	<b>CHECK ATF TEMPERATURE.</b> Check the real fluid temperature from the transmission case surface temperature.	Is the temperature lower than «ATF Temp.» displayed on Subaru Select Monitor?	Perform the diagnosis according to DTC P0713.	When ATF temperature can be judged as actually high, perform the diagnosis again after the ATF temperature lowers.