

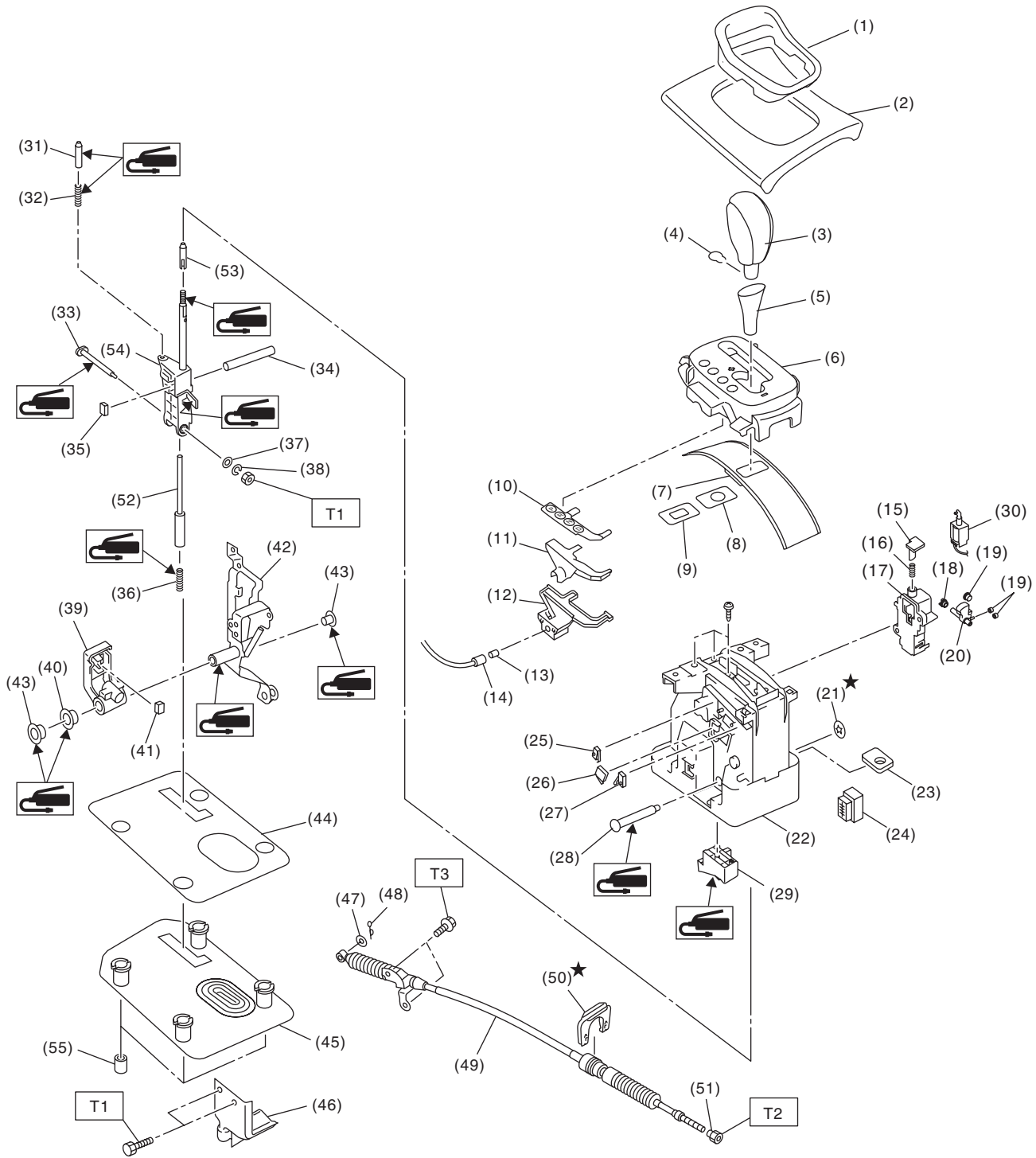
General Description

CONTROL SYSTEMS

1. General Description

A: COMPONENT

1. AT SELECT LEVER



CS-00594

General Description

CONTROL SYSTEMS

- | | | |
|-------------------------|--------------------------|------------------------------|
| (1) Ring indicator | (21) Clamp | (41) Air flow control switch |
| (2) Front cover | (22) Base ASSY | (42) Arm ASSY |
| (3) Grip ASSY | (23) Spacer | (43) Bushing |
| (4) Grip pin | (24) Harness connector | (44) Dust cover bracket |
| (5) Grip cover | (25) Shift-up switch | (45) Dust cover |
| (6) Indicator ASSY | (26) "P" range switch | (46) Cable bracket |
| (7) Shift blind | (27) Shift-down switch | (47) Washer |
| (8) Blind A | (28) Shaft | (48) Cotter pin |
| (9) Blind B | (29) Detent check block | (49) Select cable |
| (10) Position plate | (30) Shift lock solenoid | (50) Clamp |
| (11) Plate lamp guide | (31) Check sheet pole | (51) Adjusting nut A |
| (12) Valve case | (32) Spring | (52) Button rod |
| (13) Indicator bulb | (33) Select shaft | (53) Pusher |
| (14) Valve harness | (34) Shift position pin | (54) Selector arm ASSY |
| (15) Release rod | (35) Shift button switch | (55) Spacer |
| (16) Spring | (36) Spring | |
| (17) Lock lever bracket | (37) Washer | |
| (18) Lock lever bushing | (38) Spring washer | |
| (19) Bushing | (39) Tube cross plate | |
| (20) Lock lever | (40) Bushing | |

Tightening torque: N·m (kgf·m, ft·lb)

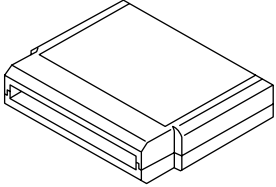

T1: 5.1 (0.52, 3.8)

T2: 7.5 (0.76, 5.5)

T3: 18 (1.8, 13.3)

B: PREPARATION TOOL

1. SPECIAL TOOL

ILLUSTRATION	TOOL NUMBER	DESCRIPTION	REMARKS
 <p>ST18482AA010</p>	18482AA010	CARTRIDGE	Troubleshooting for the electrical system.
 <p>ST22771AA030</p>	22771AA030	SUBARU SELECT MONITOR KIT	Troubleshooting for the electrical system.

C: CAUTION

- Wear work clothing, including a cap, protective goggles and protective shoes during operation.
- Remove contamination including dirt and corrosion before removal, installation or disassembly.
- Keep the disassembled parts in order and protect them from dust and dirt.
- Before removal, installation or disassembly, be sure to clarify the failure. Avoid unnecessary removal, installation, disassembly and replacement.
- Use SUBARU genuine fluid, grease etc. or equivalent. Do not mix fluid, grease, etc. with that of another grade or from other manufacturers.
- Be sure to tighten fasteners including bolts and nuts to the specified torque.
- Place shop jacks or rigid racks at the specified points.
- Apply grease onto sliding or revolution surfaces before installation.
- Before installing O-rings or snap rings, apply sufficient amount of fluid to avoid damage and deformation.
- Before securing a part in a vise, place cushioning material such as wood blocks, aluminum plate or cloth between the part and the vise.
- Before disconnecting electrical connectors, be sure to disconnect the negative terminal from battery.