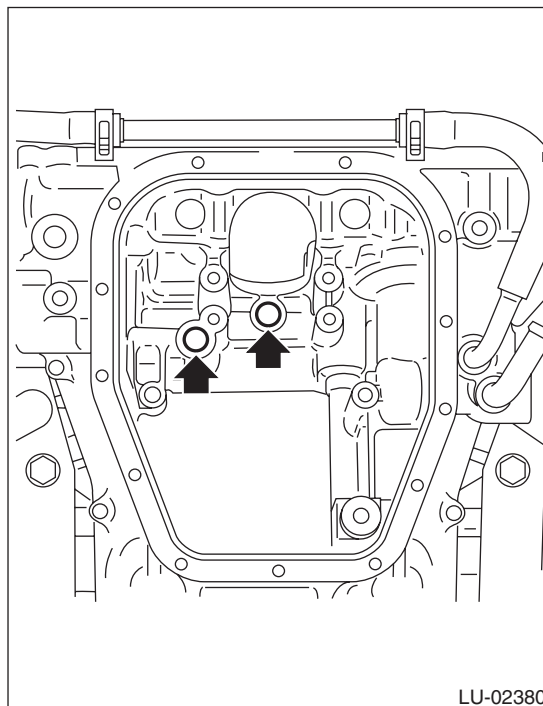


## 5. Oil Pump

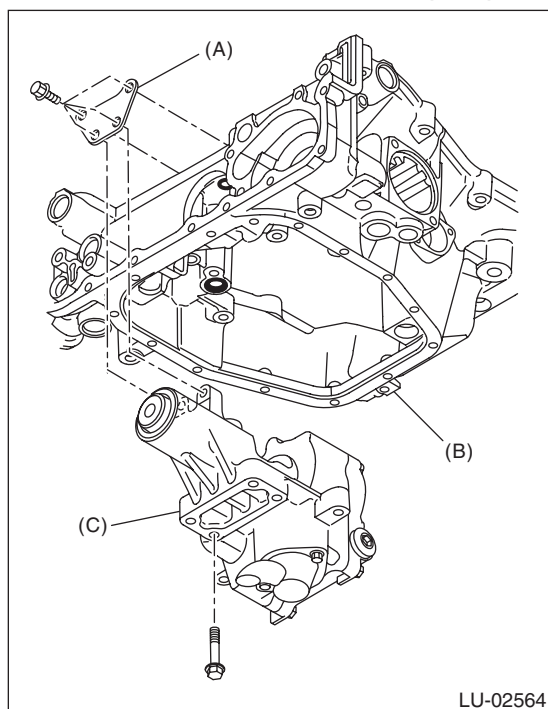
### A: REMOVAL

- 1) Remove the collector cover.
- 2) Disconnect the ground cable from battery.
- 3) Lift up the vehicle.
- 4) Remove the under cover. <Ref. to EI-18, REMOVAL, Front Under Cover.>
- 5) Drain the engine oil. <Ref. to LU(H6DO)-10, REPLACEMENT, Engine Oil.>
- 6) Drain engine coolant. <Ref. to CO(H6DO)-12, DRAINING OF ENGINE COOLANT, REPLACEMENT, Engine Coolant.>
- 7) Lower the vehicle.
- 8) Remove the radiator. <Ref. to CO(H6DO)-17, REMOVAL, Radiator.>
- 9) Remove the V-belts. <Ref. to ME(H6DO)-46, REMOVAL, V-belt.>
- 10) Remove the crank pulley. <Ref. to ME(H6DO)-47, REMOVAL, Crank Pulley.>
- 11) Remove the chain cover. <Ref. to ME(H6DO)-48, REMOVAL, Chain Cover.>
- 12) Remove the timing chain. <Ref. to ME(H6DO)-55, REMOVAL, Timing Chain Assembly.>
- 13) Remove the oil pan lower. <Ref. to LU(H6DO)-12, REMOVAL, Oil Pan.>
- 14) Remove the stiffener and the oil pump.

- 15) Remove the strainer from the oil pump.
- 16) Remove the O-ring from oil pan upper.



LU-02380



LU-02564

- (A) Stiffener
- (B) Oil pan upper
- (C) Oil pump

# Oil Pump

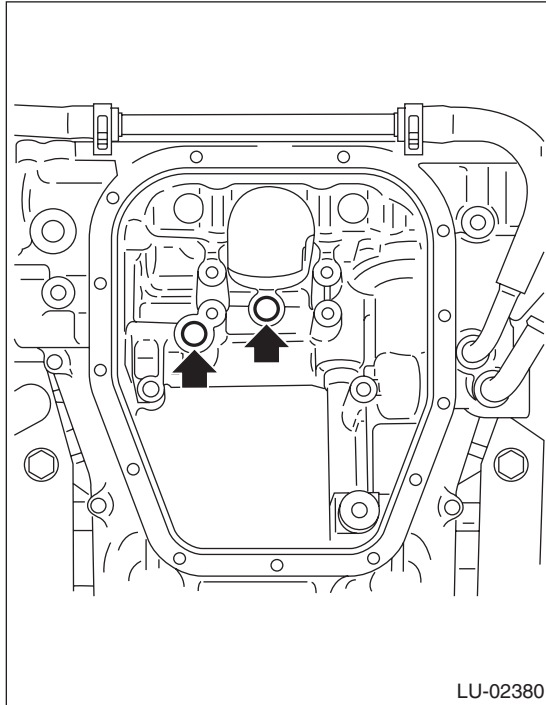
## LUBRICATION

### B: INSTALLATION

1) Apply engine oil to the O-ring and attach it to the oil pan upper.

#### NOTE:

Use new O-rings.



2) Apply liquid gasket to the mating surfaces of strainer.

#### Liquid gasket:

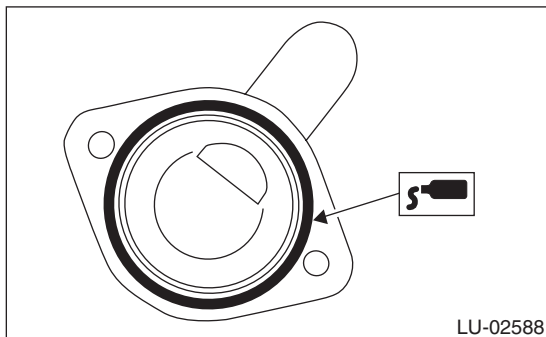
**THREE BOND 1217G (Part No. K0877Y0100)  
or equivalent**

#### Liquid gasket applying diameter:

**$2.0 \pm 1.0$  mm ( $0.079 \pm 0.039$  in)**

#### NOTE:

- Install within 5 min. after applying liquid gasket.
- After installing the strainer, remove any liquid gasket that is squeezed out.



3) Install the strainer to the oil pump.

#### Tightening torque:

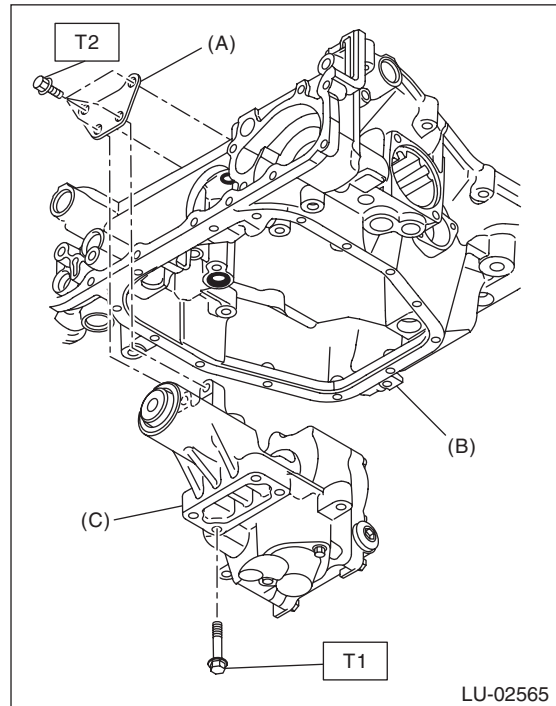
**$6.4$  N·m ( $0.7$  kgf·m,  $4.7$  ft·lb)**

4) Install the stiffener and the oil pump.

#### Tightening torque:

**$T1$ :  $13$  N·m ( $1.3$  kgf·m,  $9.6$  ft·lb)**

**$T2$ :  $24$  N·m ( $2.4$  kgf·m,  $17.7$  ft·lb)**



(A) Stiffener

(B) Oil pan upper

(C) Oil pump

5) Install the oil pan lower. <Ref. to LU(H6DO)-12, INSTALLATION, Oil Pan.>

6) Install the timing chain. <Ref. to ME(H6DO)-61, INSTALLATION, Timing Chain Assembly.>

7) Install the chain cover. <Ref. to ME(H6DO)-50, INSTALLATION, Chain Cover.>

8) Install the crank pulley. <Ref. to ME(H6DO)-47, INSTALLATION, Crank Pulley.>

9) Install the V-belts. <Ref. to ME(H6DO)-46, INSTALLATION, V-belt.>

10) Install the radiator. <Ref. to CO(H6DO)-19, INSTALLATION, Radiator.>

11) Lift up the vehicle.

12) Install the under cover. <Ref. to EI-18, INSTALLATION, Front Under Cover.>

13) Lower the vehicle.

14) Fill the ATF. <Ref. to CO(H6DO)-12, FILLING OF ENGINE COOLANT, REPLACEMENT, Engine Coolant.>

15) Refill the engine oil. <Ref. to LU(H6DO)-10, REPLACEMENT, Engine Oil.>

16) Check the engine oil level. <Ref. to LU(H6DO)-10, INSPECTION, Engine Oil.>

### C: INSPECTION

1) Visually check the oil pump for breakage.

2) Visually check the strainer portion for clogging.