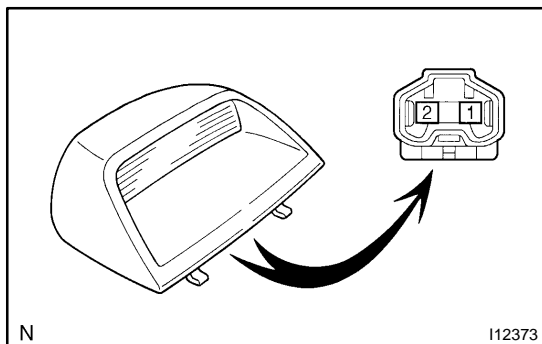


INSPECTION

1. INSPECT STOP LIGHT SWITCH CONTINUITY

Switch position	Tester connection	Specified condition
Switch pin pushed in (Pedal released)	-	No continuity
Switch pin free (Pedal depressed)	1 - 2	Continuity

If continuity is not as specified, replace the switch.



2. INSPECT HI-MOUNTED STOP LIGHT CONTINUITY

Using the ohmmeter, check that continuity exists between terminals.

If continuity is not as specified, replace the light assembly or bulb.